

1: MEET the General Admission Requirements

All SUI students must:

- Be a current resident of California. A government-issued I.D. is required.
- Be at least 18 (age will be verified with Individual's I.D.)
- Provide documentation of eligibility to work in the United States.
- Provide proof of appropriate educational requirements such as:
 - Copy of high school diploma or
 - Copy of high school transcript showing graduation date or GED or
 - Translated and evaluated foreign secondary diplomas by NACES-approved agencies.

2: MEET the Program Admission Requirements

Diagnostic Medical Sonography and Cardiac Admissions Requirements:

- Meet the General Admissions Requirements.
 - Hold an associate degree or higher in any discipline.
 - Complete (defined as receiving a grade of "B" or higher) college-level coursework in the subjects listed below. SUI does not accept Pass/Fail or Credit/No Credit grades to fulfill admissions prerequisites. Courses must be a minimum of five-quarter credits or 3-semester credits. All prerequisite courses together must equal 25-quarter or a 16.6-semester credit.
 - Physics (topics must include sound waves, heat, light, and motion)
 - Communications (oral, reading, or written)
 - Mathematics (Intermediate Algebra or higher-level mathematics)
 - Human Anatomy & Physiology (ten quarter credits or six semester credits)
- * All courses must be completed by the end of the application window before applying.*

MRI Technologist, Radiologic Technology, Invasive Cardiovascular Technology Program Admission Requirements:

- Meet the General Admission Requirements.
- Program Prerequisites: None
 - Transfer Credit Guidelines
 - Transfer Credits are evaluated upon program acceptance and must be processed at enrollment.
 - There is a \$75 non-refundable evaluation fee for transfer credits.
 - To receive credit for the courses listed below, a letter grade of "B" or better must be completed within the last five (5) years from an accredited institution.
 - Anatomy and Physiology
 - Medical Terminology
 - College Reading
 - Mathematics
 - Psychology (MRI only)

** For more detailed information regarding transfer credit guidelines, see the SUI [Catalog](#)*

3: ATTEND a Program-based Webinar Info-session

Students who are interested in SUI programs should start the application process by **attending or watching a recorded program-based Webinar Info-session**. During the webinar info session, applicants will learn about the history and accreditations of SUI, general and program admission requirements, program structure, tuition cost breakdown. Additionally, applicants will be given an overview of the application process and obtain resources and tools that will allow them to make an informed decision about their career.

4: REQUEST an Application Packet

After attending or watching a recorded program info session, email admissions@sui.edu to request an Application Packet for your desired program. If applying for DMS or CS programs, ensure *you have met* the general and program admission prerequisites by sending your transcripts to transcripts@sui.edu for a prerequisite evaluation.

5: APPLY/SIGN Initial Documents

Once you receive the Application Packet, you will be prompted to review and sign the following initial documents: School Performance Fact Sheet, Physical Demand Form, and Distance Education Survey. You will also be required to complete the online application and submit a copy of your ID/DL card. When completing the online application and initial documents, use your full legal name and include a professional email address.

6: TAKE Wonderlic Entrance Exam

Upon receipt of the Initial Documents and the Online Application, an invitation to the Wonderlic Scholastic Level Exam (SLE) is sent. The applicant will get **two** attempts to successfully pass the SLE exam with a score of 20+. This exam is proctored online and is 8 minutes long. The subject matter is English grammar and Mathematics, with a combination of 30 multiple-choice and fill-in the blank questions. If needed, the second attempt must be taken 24 hours after the first attempt. A waiting period of one year is required should the applicant not pass the exam. The exam results will be communicated via email within 24-48 hours.

7. SUBMIT Documents

After successfully passing the Wonderlic Scholastic Level Exam, applicants may submit the following documents electronically to **admissions@sui.edu**

- Resume
- Statement of Intent
- (2) Recommendation Letters (Academic/Character)
- High School Diploma, H.S. Official Transcripts, or GED
- A copy of Degree(s), if available
- Official transcripts
 - Electronic transcripts are preferred and can be sent to transcripts@sui.edu
- Physical Examination Form
- Observation/Interview Form
- Background Check-*Estimated cost: \$47.00-\$50.00*

NOTE: All documents must be saved in PDF format as individual documents and submitted in one email (File save Example: Resume-Last Name). **No Zip folder or linked Google drives will be accepted.** Foreign High Schools and Degrees must be evaluated by a NACES-approved agency.

8. GROUP INTERVIEW

Once submitted documents are evaluated, prerequisites are verified, and a clear background check is received, an invitation to the Group Interview will be sent. We highly suggest you contact ARRT or the ARDMS ethics department for clearance to sit for the registry examination.

NOTE: You will be automatically disqualified from moving forward with the application process at SUI, should you have any DUI or misdemeanor on your records.

9. SELECTION PROCESS

Application status will be shared via email based on the program application window timeline. The final admissions decision is determined by the following:

- Post-Secondary Education
- Healthcare Background
- Wonderlic Scholastic Level Exam score
- Submitted Documents
- Admissions Evaluation
- Group Interview

10. ENROLL

Students accepted to the program should be prepared to submit immunization/vaccination records, sign enrollment documents and financial contracts, and attend the mandatory New Student Orientation.

APPLICATION/ENROLLMENT PROCESS AT SUI



ATTEND

Webinar Info-Session

MEET

Prerequisite requirements
transcripts@sui.edu

REQUEST

Application Packet at
admissions@sui.edu



SIGN

Initial Documents

APPLY

Complete online Application

TAKE

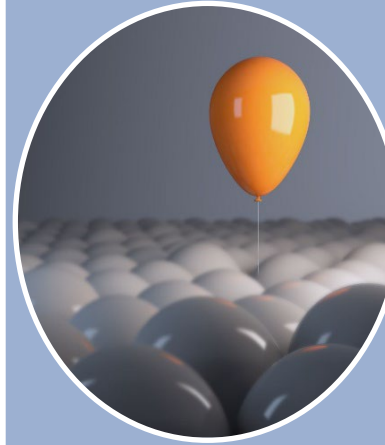
Wonderlic Entrance Exam



SUBMIT

documents after passing the
Wonderlic Exam

Resume
Statement of Intent
(2) Recommendation Letters
High School Diploma/GED or
H.S. Official Transcripts
A copy of Degree(s) / Official
transcripts
Physical Examination Form
Background Check
Observation/Interview Form



GROUP INTERVIEW

Invitation sent after
document evaluation

SELECTION PROCESS

Post-Secondary Education
Healthcare Background
Wonderlic score
Resume
Statement of Intent
Admission Evaluation
Group Interview



ENROLL

Sign enrollment
documents with
the Admissions and
Financial Aid

ATTEND

New Student Orientation